

# ALLEGHENY COUNTY

## Targeted Census Tract (5625)

### Within a Non-Target County

**Legend:**

**Boundaries**

- State
- '10 County
- '10 Census Tract

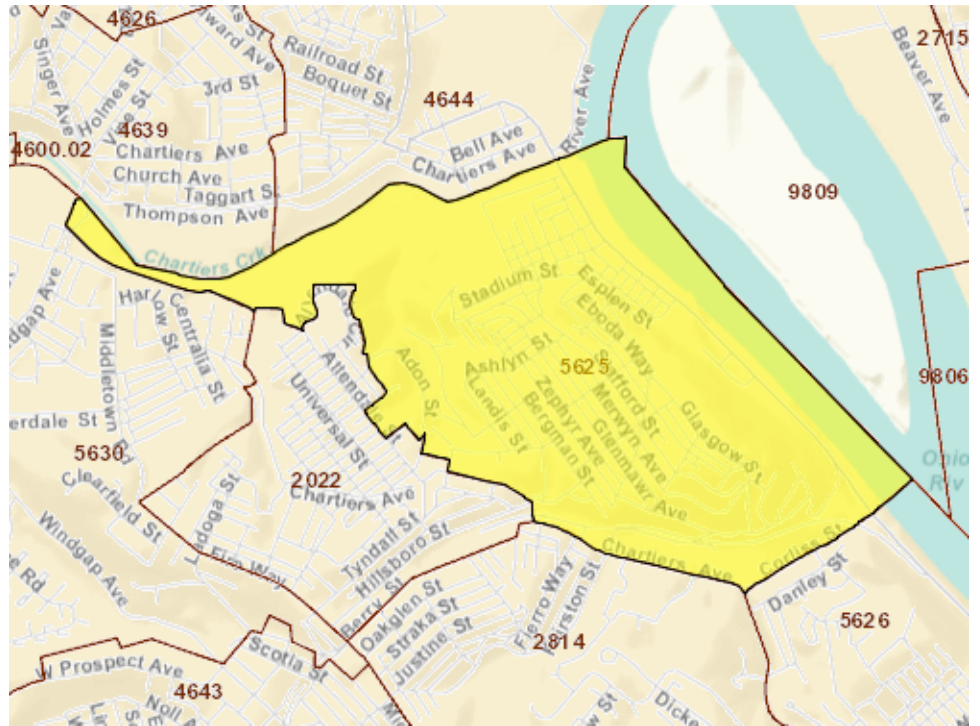
**Features**

- Major Road
- Street
- Stream/Waterbody

**Your Selections**

- Your Selections

Items in grey text are not visible at this zoom level



NOTE: Buyers purchasing a home in the census tract listed above are exempt from the first-time home buyer requirement. Also, higher income and purchase price limits generally apply. To determine the census tract of a specific property, visit [www.ffiec.gov](http://www.ffiec.gov) and click on Geocoding/Mapping System.